



**Führen Plusenergiekonzepte
zu einer anderen Architektur ?**

hotz+ architekten Matthias Hotz

Doppelhaushälfte in Eisenach Quelle: Bauwelt 22.11

„ Die Geschichte der Architektur ist die
Geschichte des Fensters “

Le Corbusier

Licht

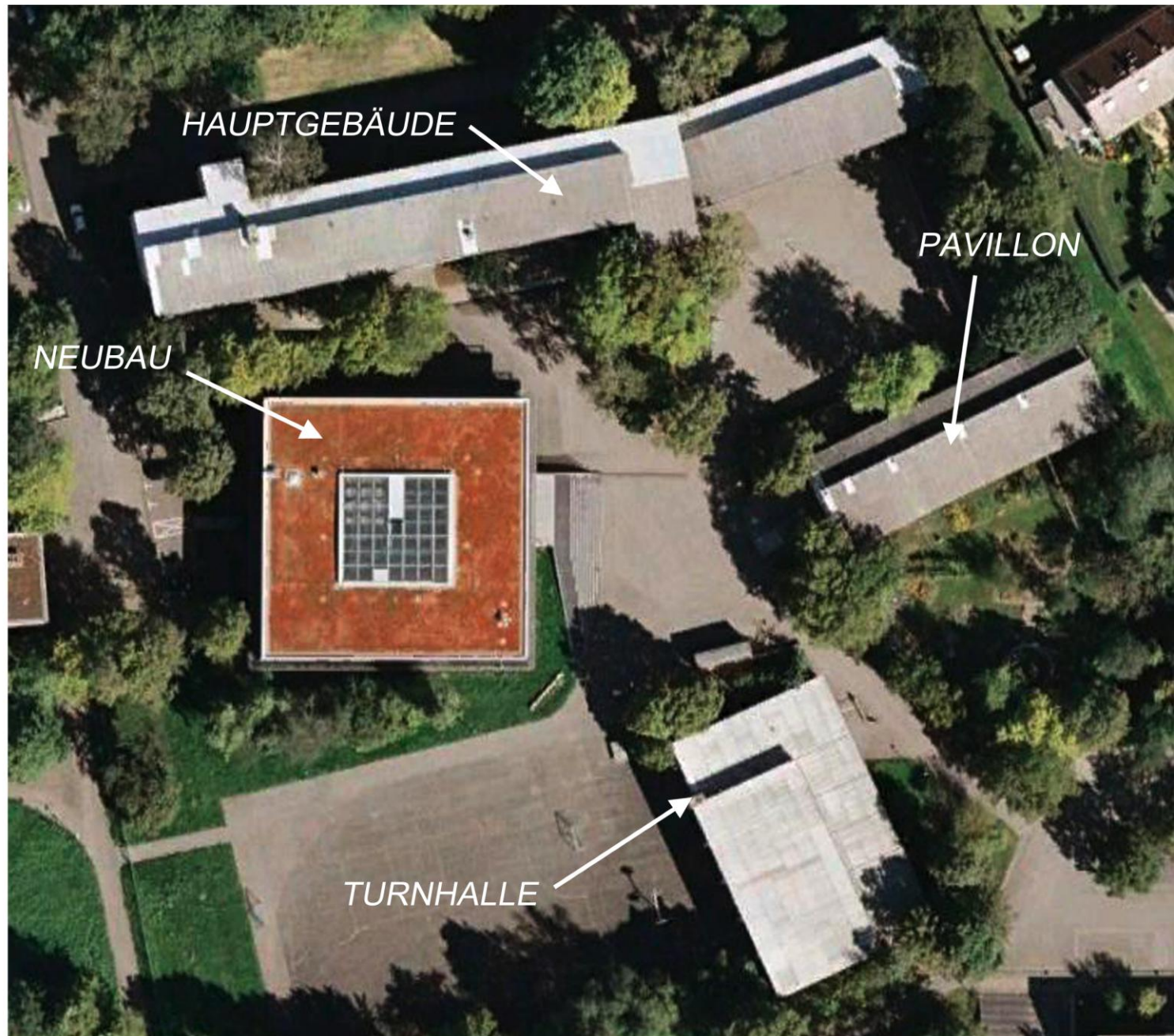


Luft



Bestandsanalyse

ÜBERSICHTSPLAN
UHLANDSCHULE
STUTTGART -
ZUFFENHAUSEN



HAUPTGEBÄUDE

NEUBAU

PAVILLON

TURNHALLE

HAUPTGEBÄUDE erbaut 1955
PAVILLON erbaut 1955
TURNHALLE erbaut 1955
NEUBAU erbaut 2006





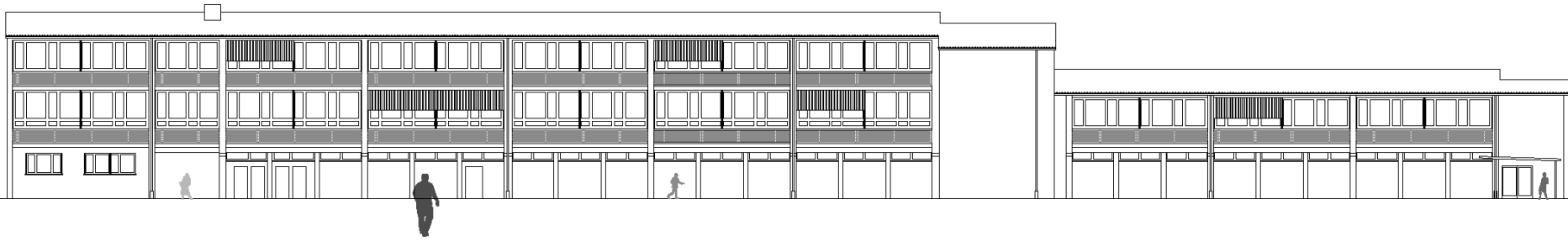


E
H
B
K
B
I
F
A

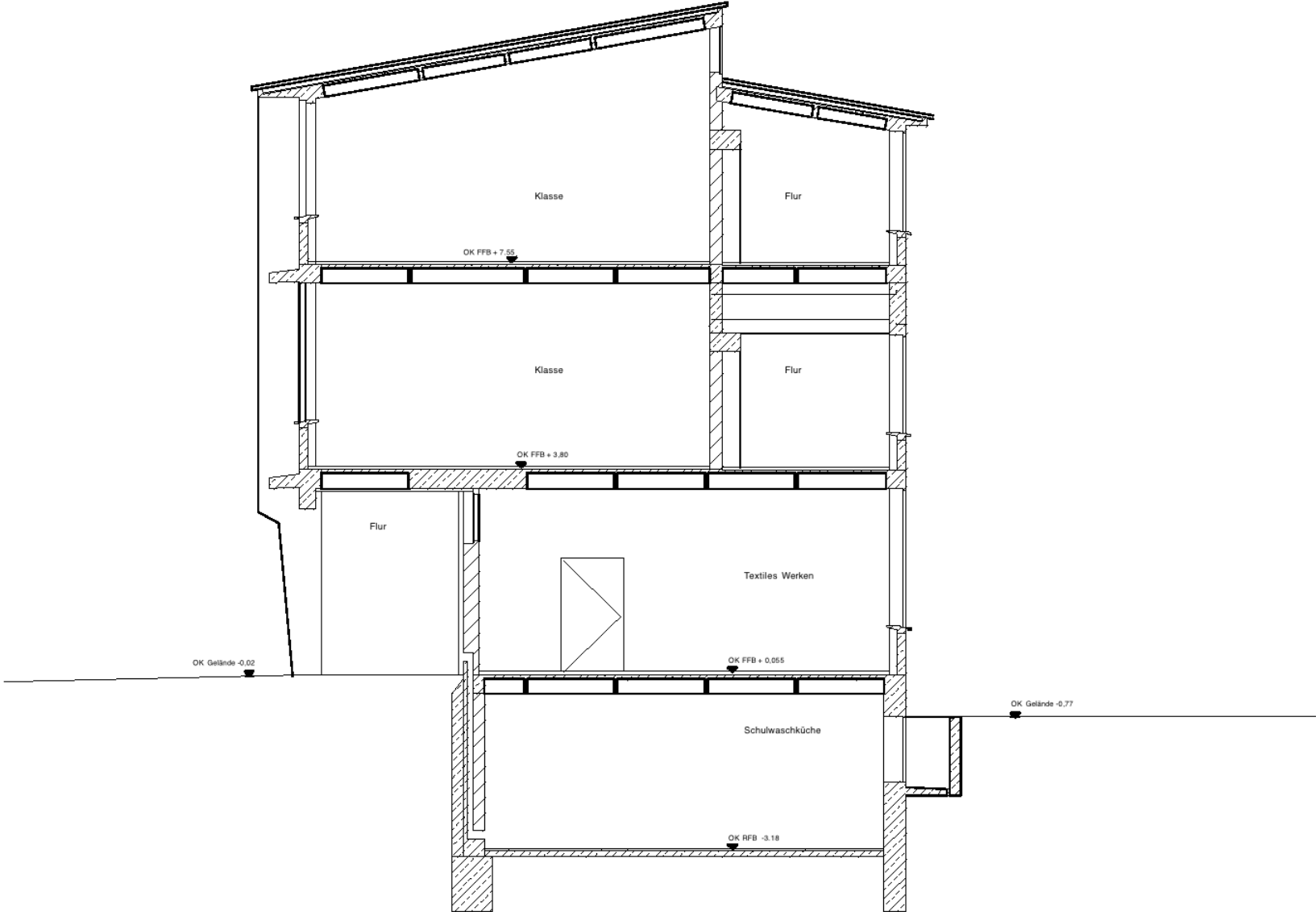




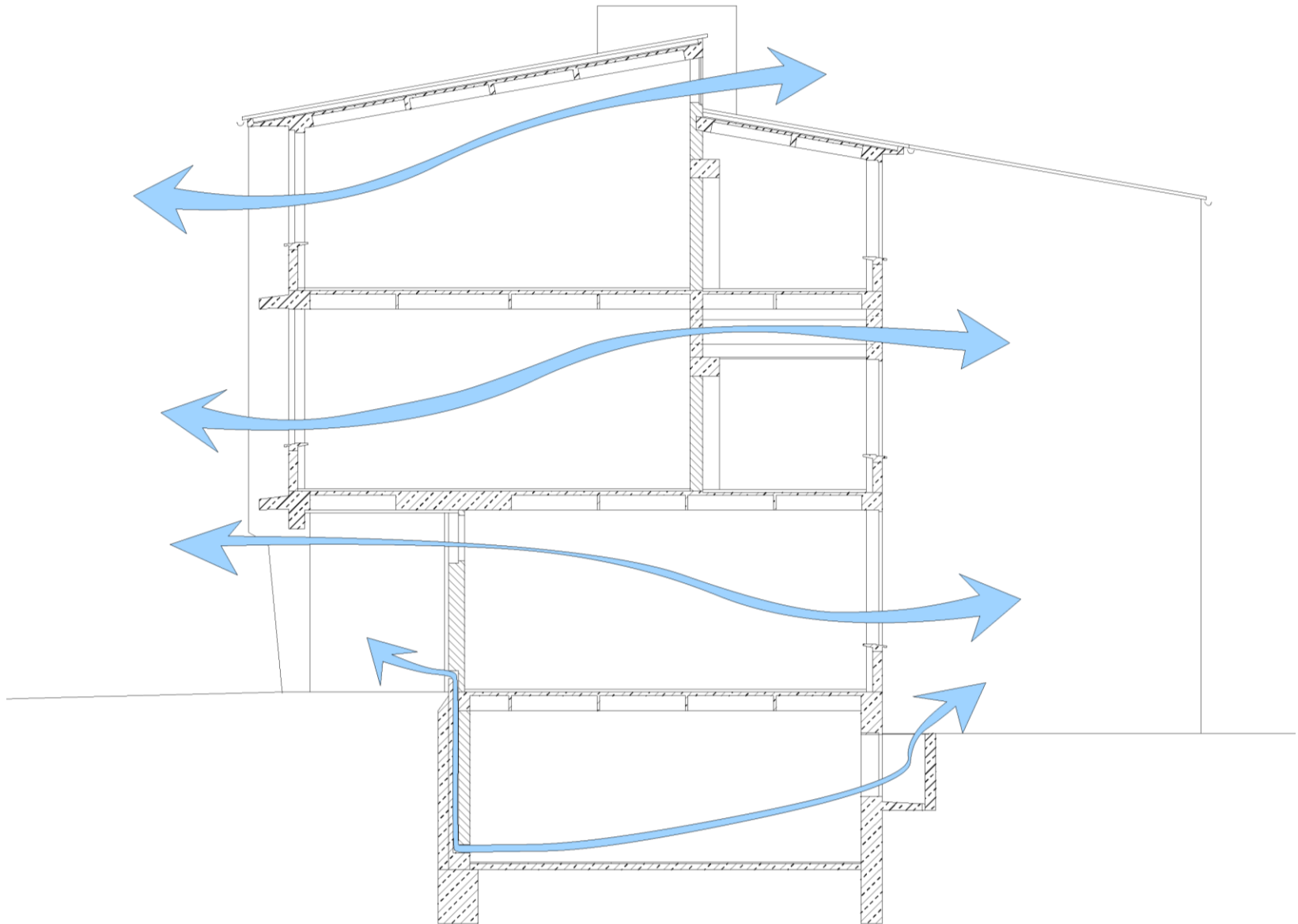
Fassade / Bestand



Schnitt / Bestand



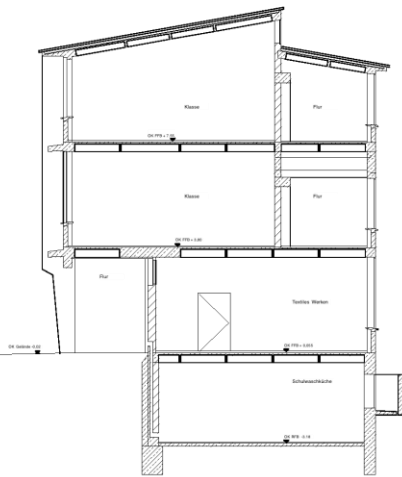
Natürliche Lüftung / Bestand 1955



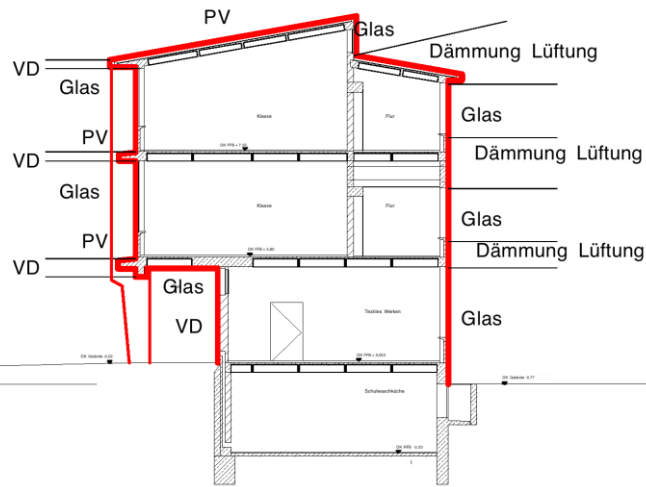
Konzeption

Schema - Schnitte

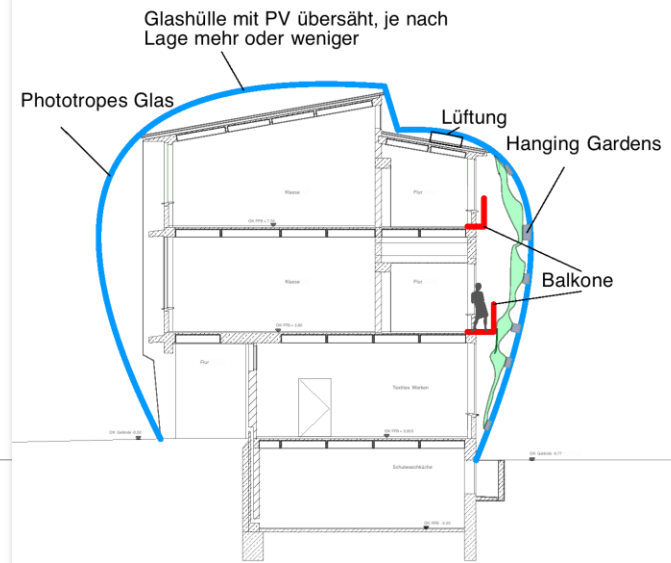
Bestand



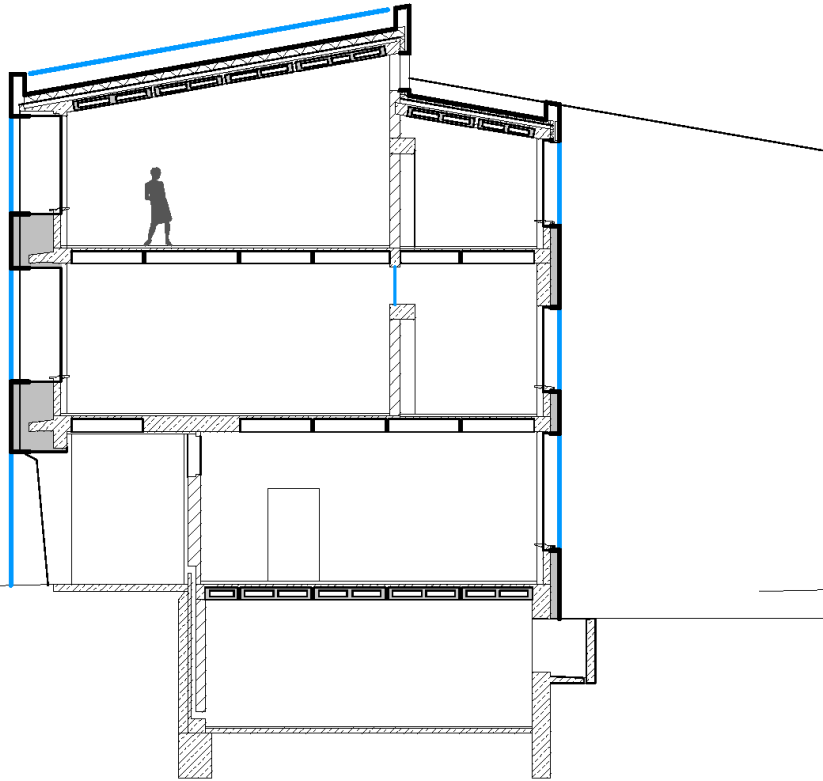
Hülle um Bestand



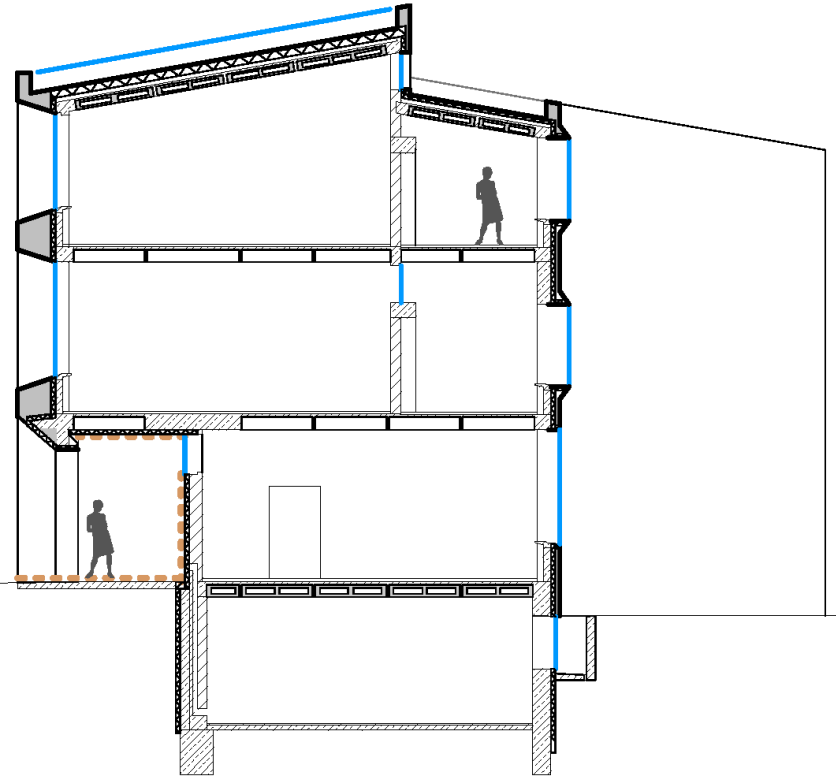
Freie Hülle



Schema – Schnitte Sanierung



Alternative 1



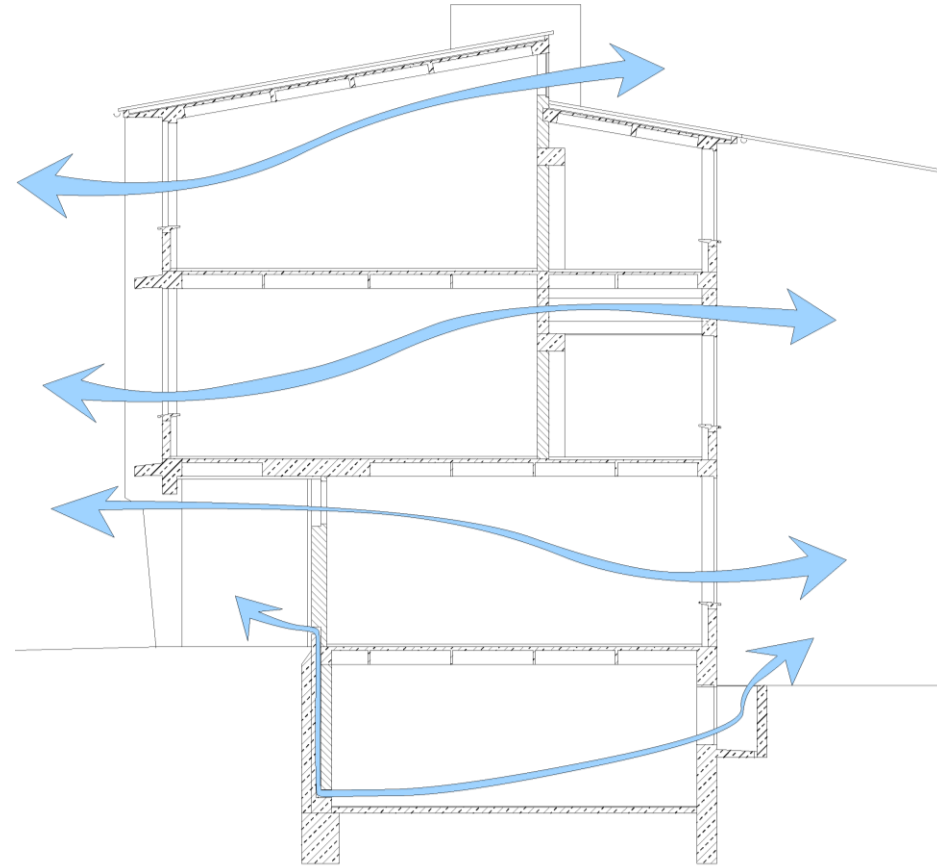
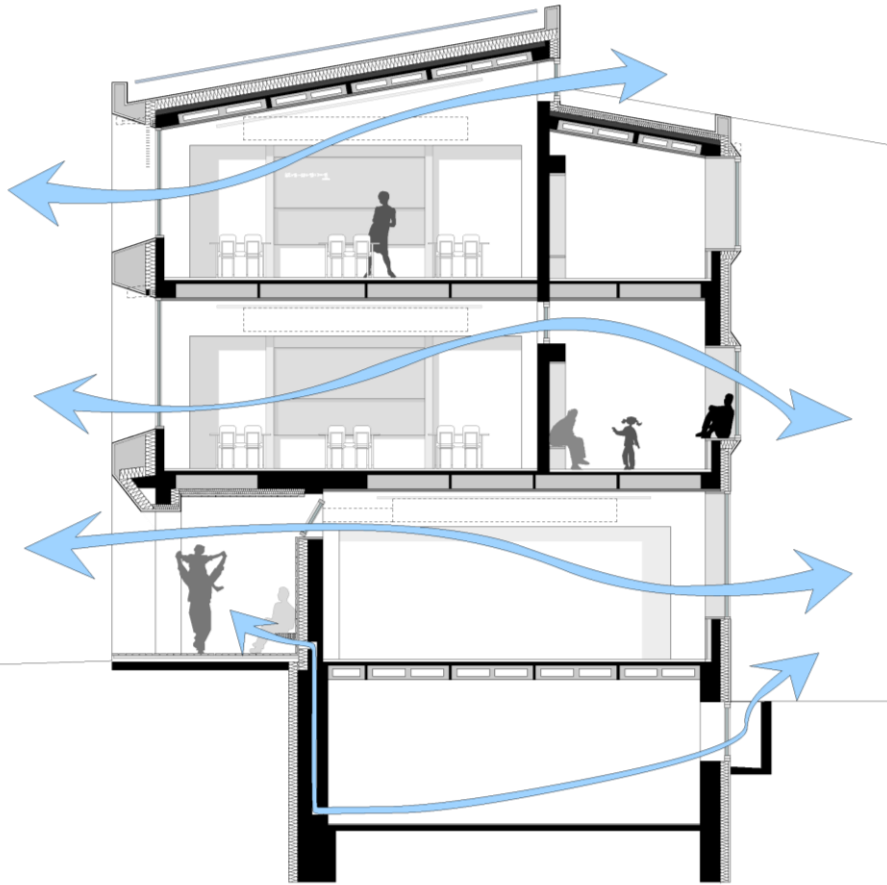
Alternative 2

Ausblick

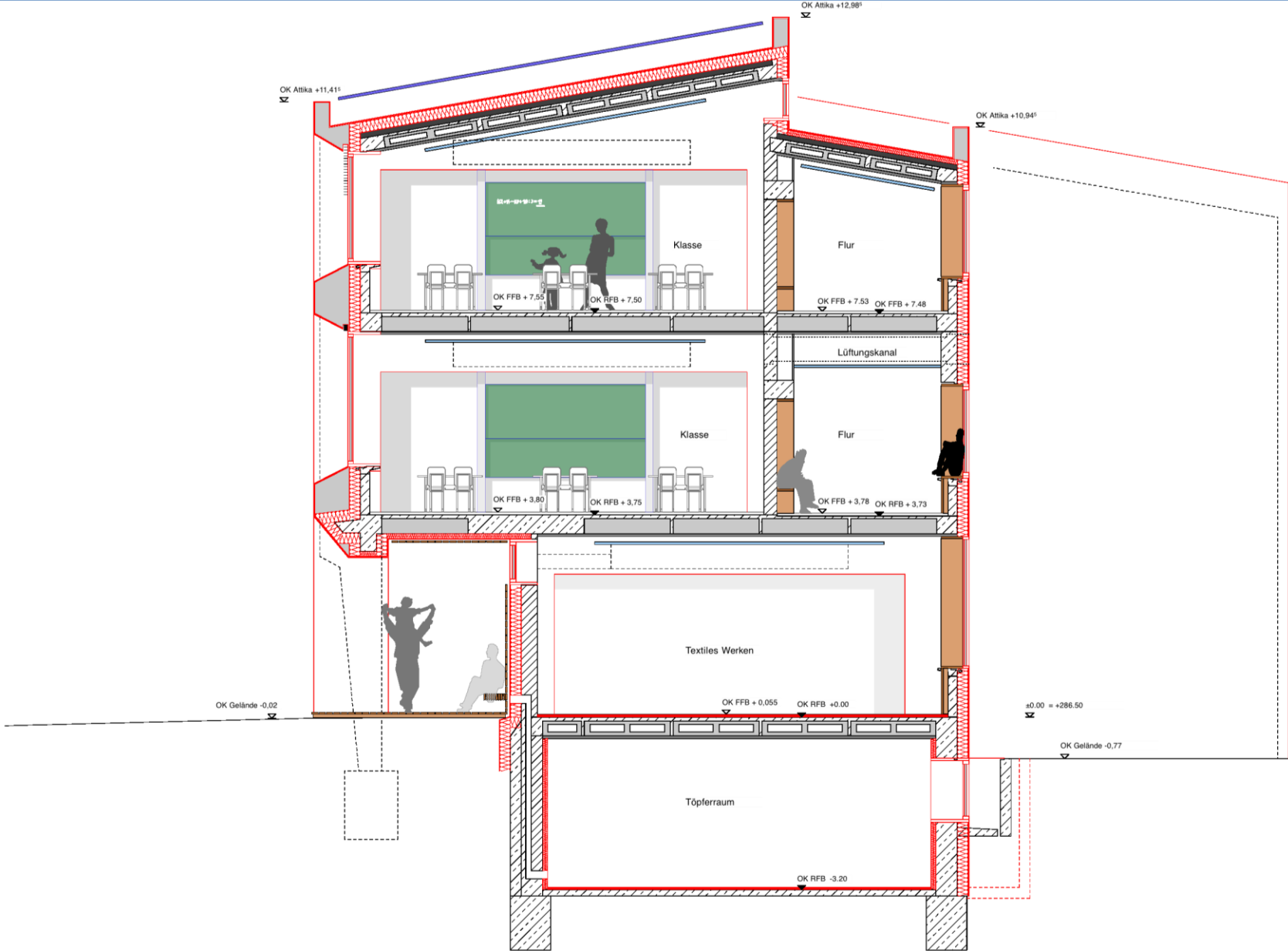


Planung

Natürliche Lüftung / Nachtlüftung / 1955 - 2011

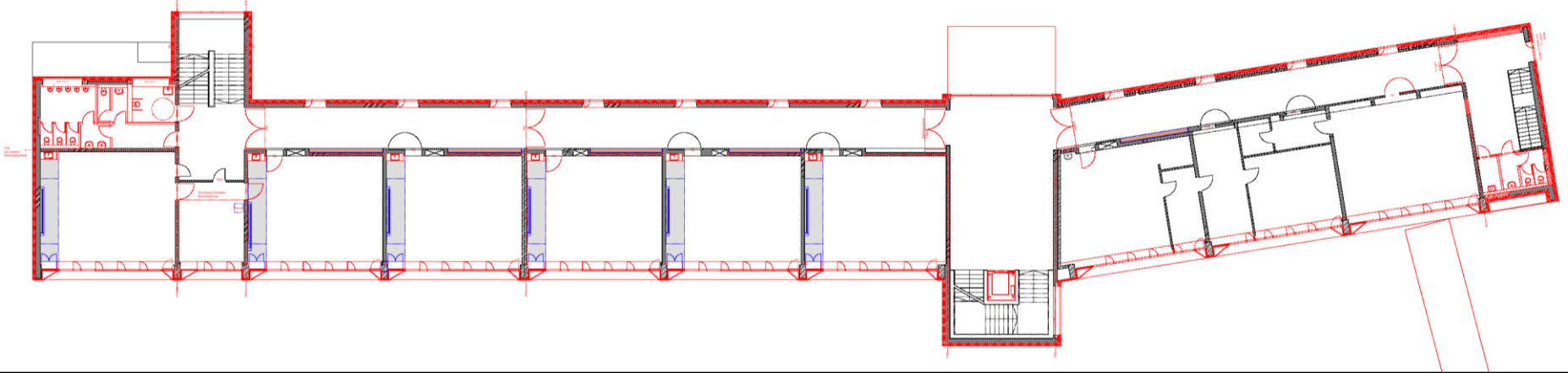


Schnitt Neu

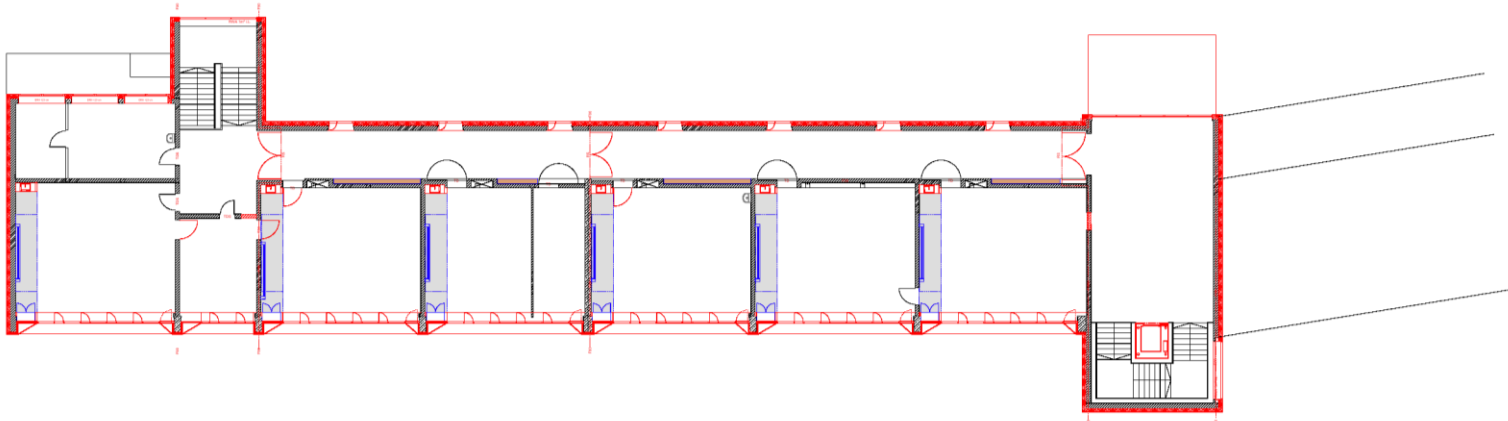


Hauptgebäude

Grundrisse

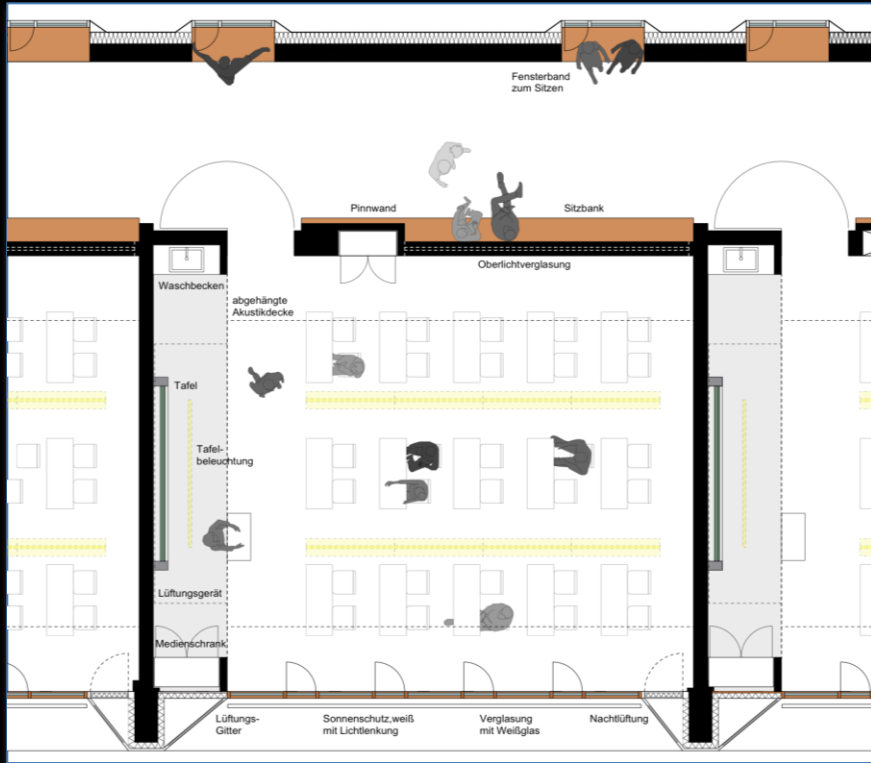


1. Obergeschoss

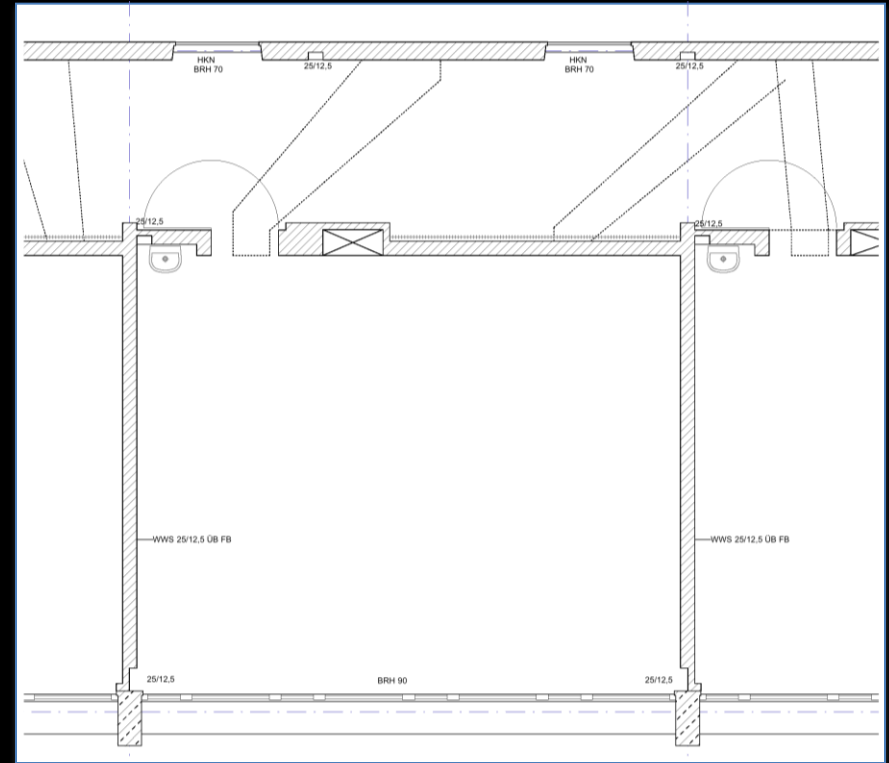


2. Obergeschoss

Schema – Klasse Regelgeschoss

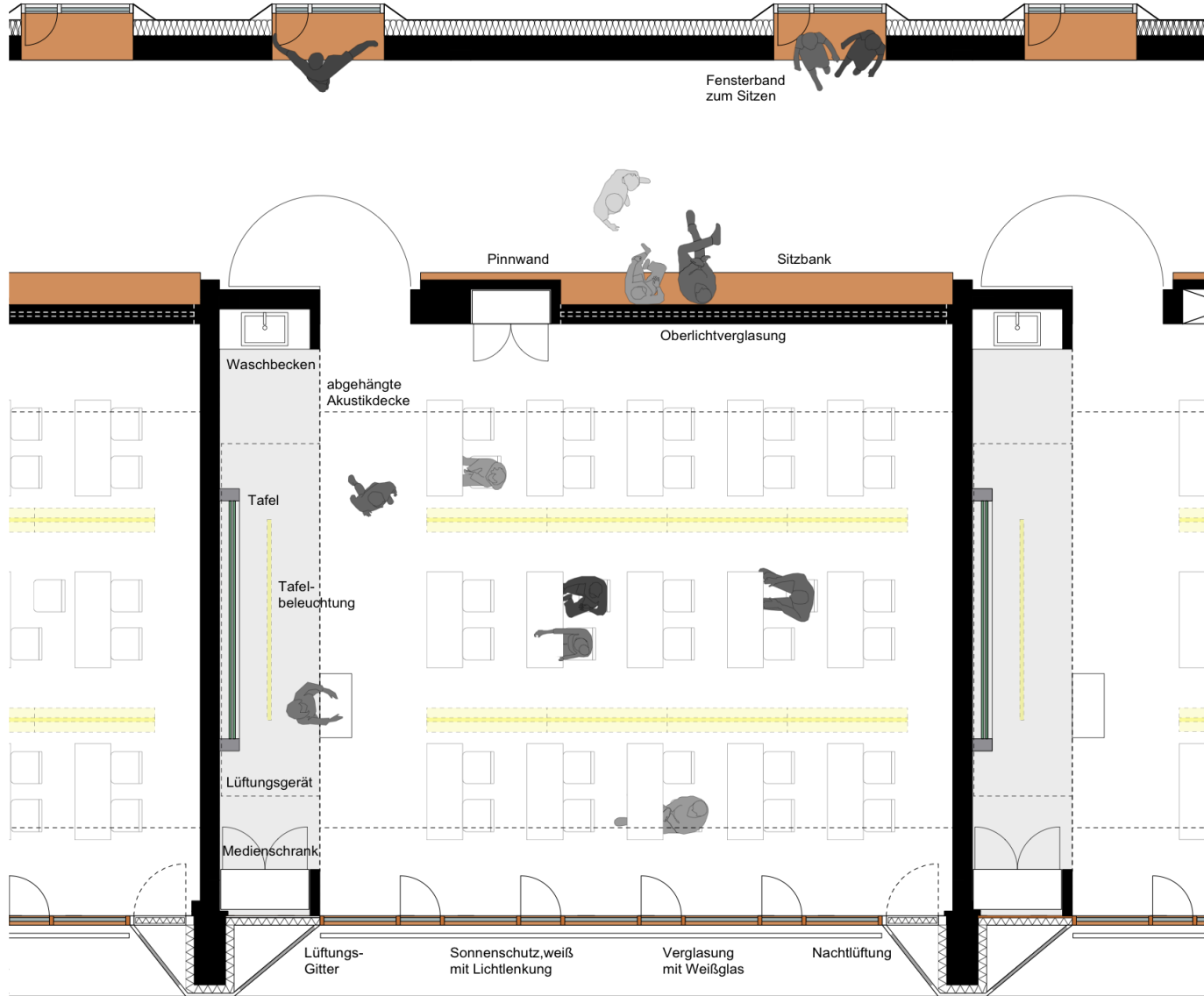


Neu



Bestand

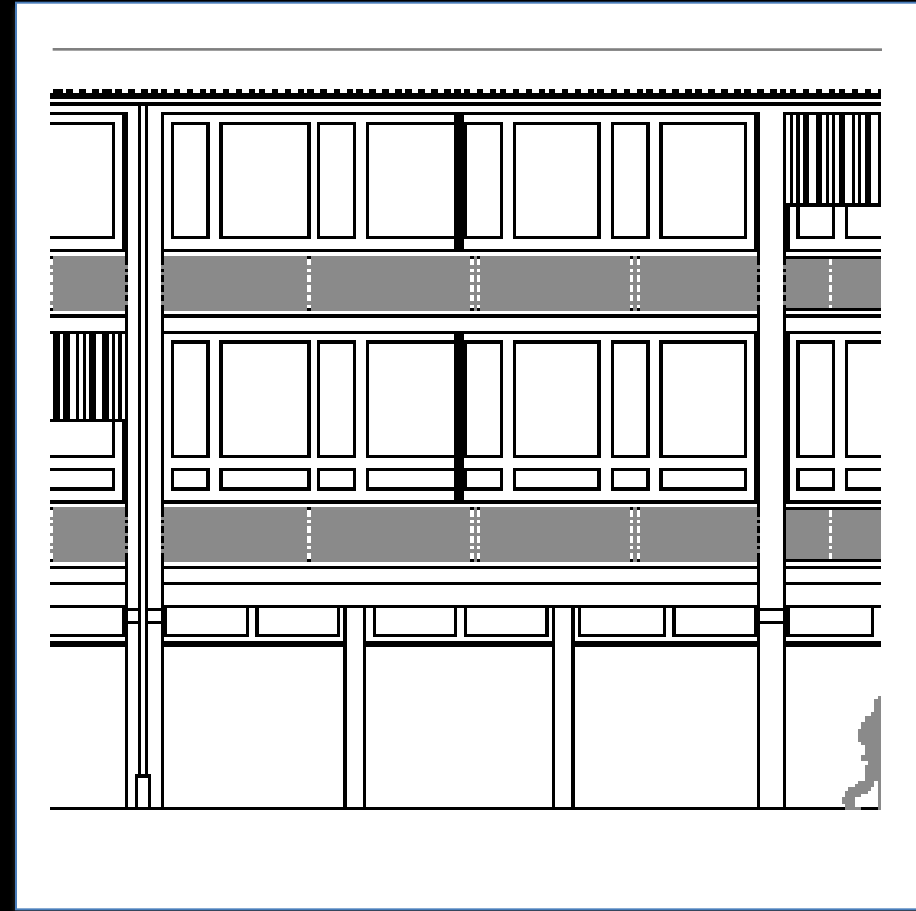
Schema – Klasse Regelgeschoss



Fassadengestaltung

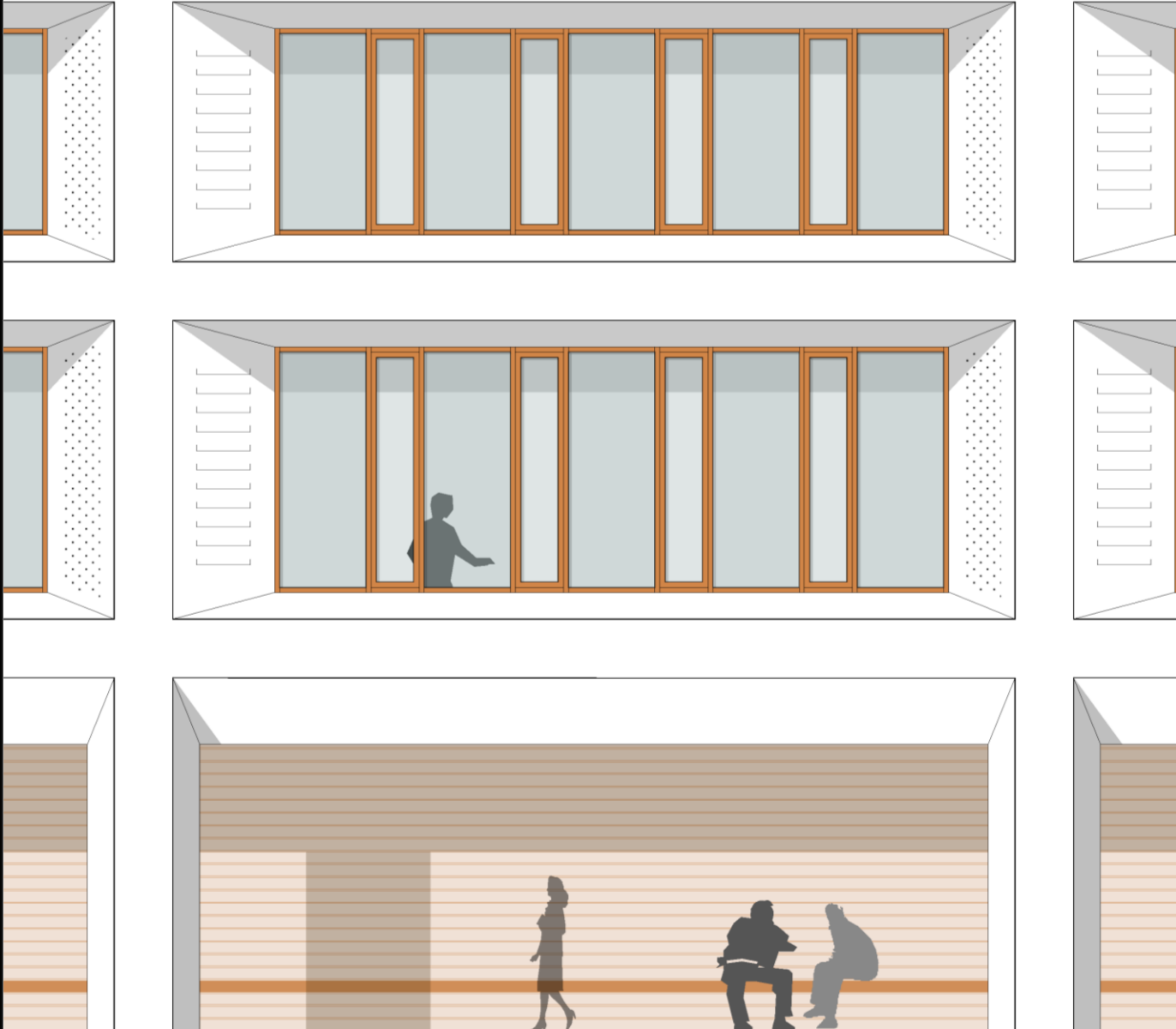


Neu



Bestand

Fassadengestaltung



Fassadengestaltung



Neu



Bestand



„ Zurück in die Zukunft “

Matthias Hotz